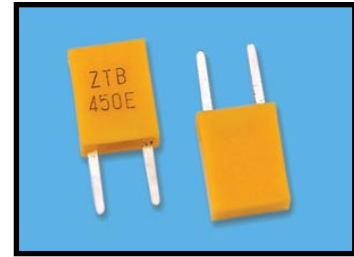


Dip Type

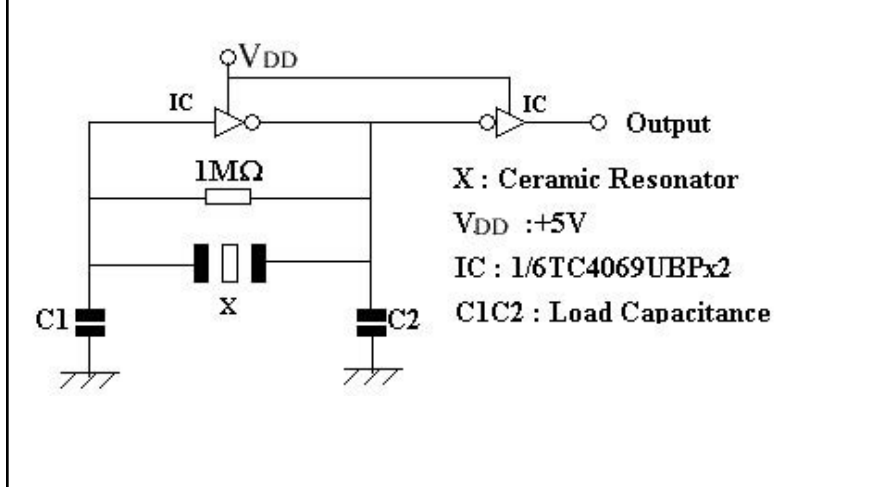
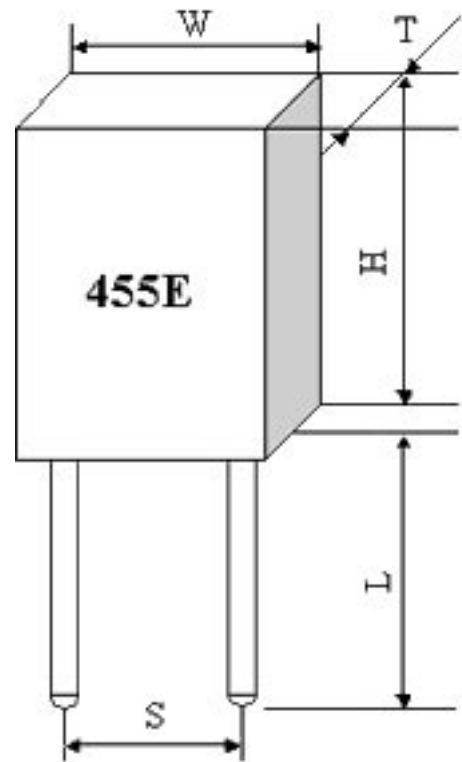
Features:

- Low cost.
- Industry standard dimensions.
- Built-in capacitance load.
- Low frequencies.
- High stability.
- **RoHs Compliant (Pb Free)**
- **Exemption according to RoHs Directive 2002/95/EC Annex point 7**



Electrical Specifications:

Part Number *	Frequency Range (MHz)	Resonant Resistance (ESR) Ω max.	Capacitance Values (± 20%)		Frequency Accuracy (at 25°C)	Dimensions (mm)				
			C1	C2		W	H	L	S	T
ZTB ___ E	190 - 249	≤ 20	330 pF	470 pF	± 1KHz	13.5	14.7	8.0	10.0	3.8
ZTB ___ E	250 - 374	≤ 20	220 pF	470 pF	± 1KHz	11.0	12.2	7.0	10.0	3.8
ZTB ___ E	375 - 400	≤ 20	120 pF	470 pF	± 1KHz	7.9	9.3	7.0	7.7	3.6
ZTB ___ E	401 - 429	≤ 20	120 pF	470 pF	± 1KHz	7.0	9.0	4.0 (6.0)	5.0	3.5
ZTB ___ E	430 - 509	≤ 20	100 pF	100 pF	± 2KHz	7.0	9.0	4.0 (6.0)	5.0	3.5
ZTB ___ E	510 - 699	≤ 20	100 pF	100 pF	± 2KHz	7.0	9.0	4.0 (6.0)	5.0	3.5
ZTB ___ E	700 - 1250	≤ 70	100 pF	100 pF	± 0.5KHz	5.2	6.8	3.5	2.5	2.8
Operating Temperature	- 20°C to 80°C									
Storage Temperature	- 55°C to 85°C									
Frequency Tolerance (at 25°C)	± 0.3% max.									
Aging for 10 years	± 0.3% max.									
Rating Voltage	DC Voltage 6VDC AC Voltage 15Vpp									
Insulation Resistance	100MΩ min. at 10VDC									
Optional Features	Tape & reel									



* Complete part number to include frequency i.e. ZTB455E (455 = 455KHz).