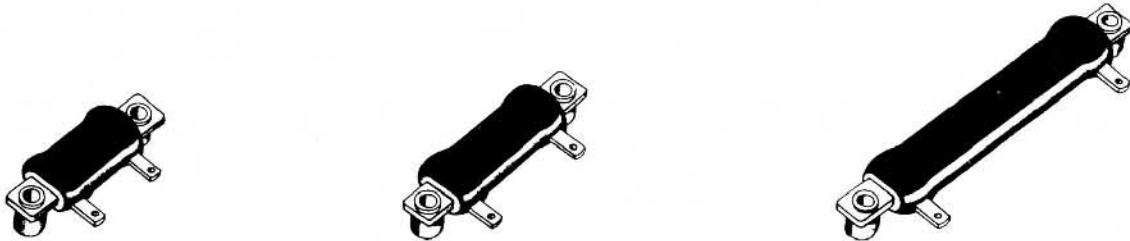


10 WATTS thru 20 WATTS

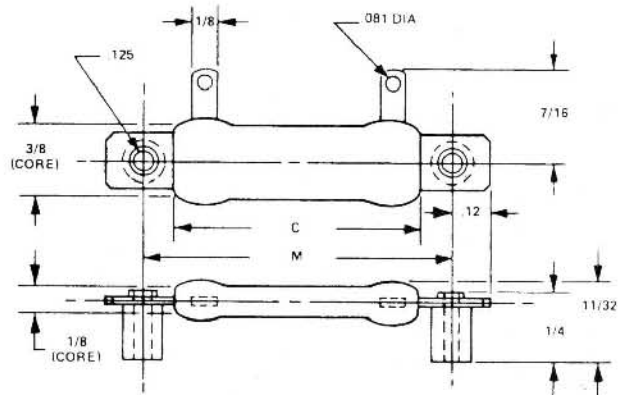


TYPE	WATT	C	M
FVOT-10	10	3/4	1
FVOT-15	15	1	1 1/4
FVOT-20	20	2	2 5/16

**NOTE:** The above chart applies to both vitreous and silicone coated resistors. The "type" nomenclature shown is for vitreous coating. When ordering silicone substitute the letter "S" for the letter "V" in the type.  
 EXAMPLE: FVOT = VITREOUS FSOT = SILICONE

Miniature oval resistors, by their basic design, are ideally suited for applications where space is limited and the mounting surface can be utilized for heat dissipation purposes. Their thin oval-like cross section and the flat type mounting brackets allow the resistors to be easily stacked into compact units. When stacking two or more parts the wattage rating of the individual resistors should be de-rated as shown in the chart.

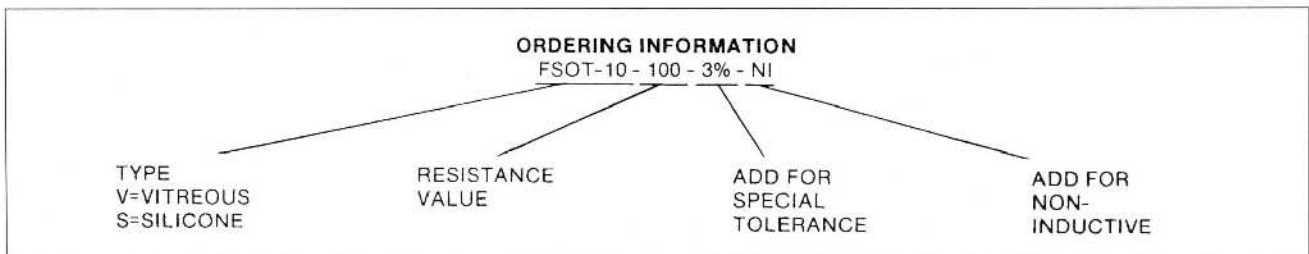
The all aluminum mounting brackets are an integral part of the resistor, extending through the resistor core to equalize heat distribution and conduct heat directly to the mounting surface. Therefore, wattage ratings are based on the use of a steel mounting surface of 10" x 10" x .040" or equivalent.



### OPTIONAL FEATURES AVAILABLE

**RESISTANCE TOLERANCE:** Standard tolerance is  $\pm 5\%$  for 1 ohm and greater and  $\pm 10\%$  for less than 1 ohm. If other than standard tolerance is required add this tolerance to the part number. (See Below)

**NON-INDUCTIVE:** Ayrton-Perry type non-inductive winding is available. When required add "NI" to part number. (See Below)



FVOT, FSOT

VITREOUS or SILICONE

10 WATTS thru 20 WATTS



### ENGINEERING DATA AND SPECIFICATIONS

**CORE:** Steatite ceramic

**TERMINALS:** Hot tin dipped are standard.

**COATING:** Available in vitreous enamel or silicone. (See ordering information.)

**BRACKETS:** All aluminum mounting brackets are an integral part of the resistor.

**TEMPERATURE COEFFICIENT:**  $0 \pm 400$  ppm/ $^{\circ}$ C 1 Ohm to 20 Ohms.  $0 \pm 260$  ppm/ $^{\circ}$ C 20 Ohms or above. (Special TC's are available. Consult factory.)

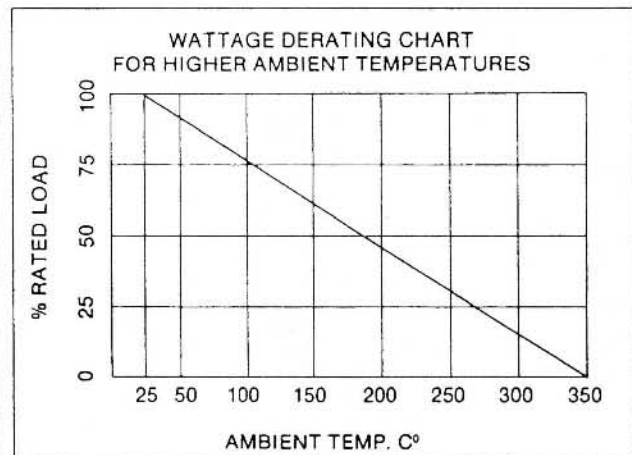
**DIELECTRIC WITHSTANDING VOLTAGE:** Measured from terminals to mounting brackets. 500 VAC.

**INDUCTANCE:** Standard parts have single layer inductive winding. Ayrton-Perry type non-inductive winding is available. (See ordering information.)

**OVERLOAD:** 10 x rated wattage for 5 seconds.

**TOLERANCE:**  $\pm 5\%$  is standard for 1 Ohm and greater.  $\pm 10\%$  for less than 1 Ohm. Special tolerances available. (See ordering information.)

**WATTAGE RATING:** Based on a single resistor mounted on a 10" x 10" x .040 steel mounting surface or equivalent. See derating chart for stacked resistors or higher ambient temperatures.



**WATTAGE DERATING FOR  
MULTIPLE STACKED RESISTORS**

Number of Resistors	% Of Single Unit Rating	% with a 3/32" Spacer
2	70	75
3	60	70
4	50	60