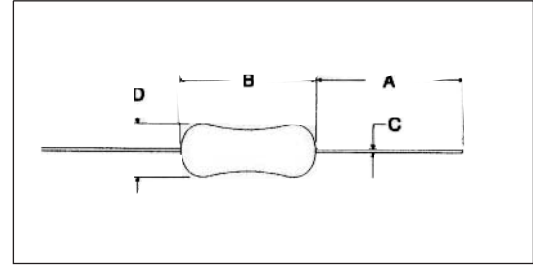


# PULSE METAL (GLAZE) RESISTORS

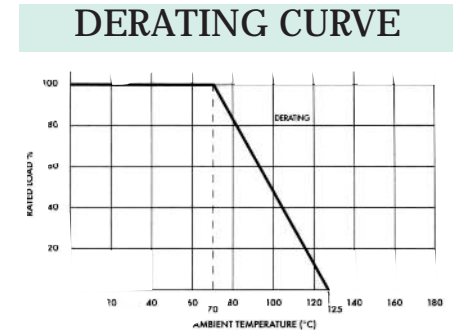


## GMP 1/2

- High Resistance with stability
- Withstands high voltage
- Temperature Coefficient of  $\pm 100\text{ppm}/^\circ\text{C}$
- E24 standard values available
- Tape & Reel packaging per RS-296



PERFORMANCE CHARACTERISTICS	
ELECTRICAL	GMP 1/2
Power Rating (watts)	1/2 @ 70°C
Derated to 0 Load at	125°C
Maximum Working Voltage	1000V
Operating Temperature Range	-30°C ~ +125°C
Resistance Range	.33 - 33M
Tolerance	$\pm 20\%$
Maximum Overload Voltage	2000V
Maximum Pulse Voltage	3000V
Insulation Resistance, Dry	10,000 meg min.



ENVIRONMENTAL (Operating Temp. Range: -30°C ~ +125°C)	
Moisture Resistance	$\pm 5\%$
Thermal Shock	$\pm 3\%$
Load Life @ 70°C - 1,000 hrs.	$\pm 5\%$
Resistance to Soldering Heat	$\pm 2\%$
Short Time Overload	$\pm 2\%$

PULSE CHARACTERISTICS	
Applied Voltage (AC)	5KV
Pulse Test	1 sec. ON 1 sec. OFF 5 cycles
Resistance Change	$\pm 5\%$ max.

DIMENSIONS		Inches (mm)
Feature	GMP 1/2	
A - Lead Length (typ.)	1.18 $\pm$ .12 (30.0 $\pm$ 3.0)	
B - Body Length	.35 $\pm$ .02 (9.0 $\pm$ 0.5)	
C - Lead Diameter	.024 $\pm$ .002 (0.60 $\pm$ 0.05)	
D - Body Diameter	.14 $\pm$ .02 (3.5 $\pm$ 0.5)	

## Part Numbering system

GMP

1/2

20%

100K

TR

Type
GMP

Rated Power
1/2W

Resistance tolerance
$\pm 20\%$

Nominal Resistance	
Code	Description
R33	0.33
1M	1X10 <sup>6</sup>
33M	33X10 <sup>6</sup>

Packaging	
Code	Description
B	Bulk
TR	Tape & Reel