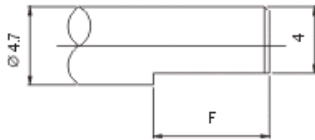


Shaft Type & Dimensions

F TYPE:



N=5

X	H	A	G	B	C
L	12	15	18	20	25
F	5	7	9	12	12

N=10

X	G	B	C		
L	18	20	25		
F	6	7	12		

Characteristics

Model	R826_E	R829_E
Rated power	0.05W	
Withstand voltage	AC 300V for 1minute	
Max. operating voltage	50V AC	
Insulation resistance	more than 100M at DC 250V	
Total rotational angle	360°	300°±5°
Click torque	2 ~ 15mN.m (20 ~ 150gf.cm)	
Click position	20 detent	16 detent
Push pull strenght	push 50N (5kgf) / pull 30N (3kgf)	
Rotation stopper strenght	-	0.3N.m (3kgf.cm)
Sliding life	30,000 cycles	