

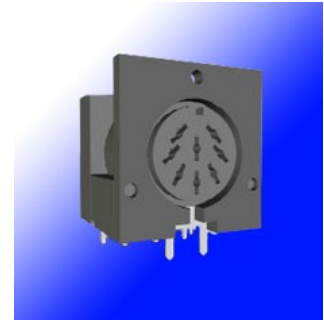
Pro Components

DF5 SERIES CIRCULAR DIN CONNECTOR R/A RECEPTACLE w/o SHIELD 5.0mm PITCH

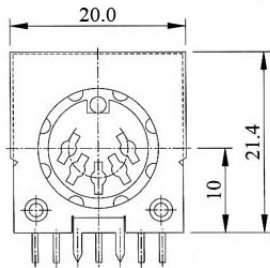


FEATURES

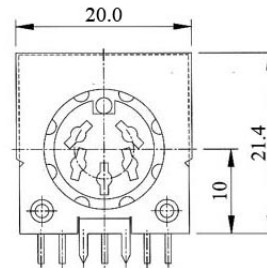
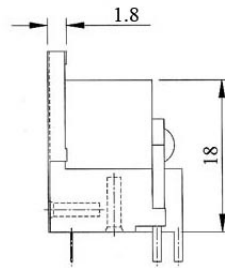
- Contact Resistance: 20m Ohm Max.
- Insulation Resistance: 100M Ohm at 500V DC
- Voltage Withstanding: AC 500V 1 Minute
- Insertation Force: 5.0KG Max.
- Withdrawal Force: 1-3.5KG
- Life Test: 5000 Cycles min after testing, contact resistance shall not exceed 100m Ohm
- Current Rating: AC: 100V 2A
DC: 24V 1 A



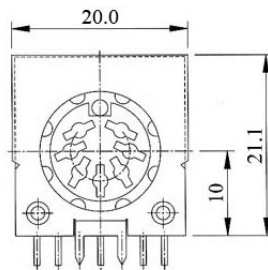
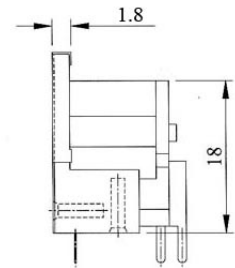
DIMENSIONS



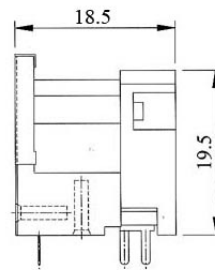
DF5-30R / DF5-50R



DF5-40R / DF5-51R / DF5-60R



DF5-70R / DF5-80R



| ARRANGEMENT OF CONTACTS (DEGREE) | (180°) | (210°) | (180°) | (240°) | (240°) | (270°) | (270°) |
|----------------------------------|---------|---------|---------|---------|---------|---------|---------|
| NO. OF CONTACTS | 3 | 4 | 5 | 5 | 6 | 7 | 8 |
| MODEL NO. | DF5-30R | DF5-40R | DF5-50R | DF5-51R | DF5-60R | DF5-70R | DF5-80R |
| HOLE LAYOUT | | | | | | | |