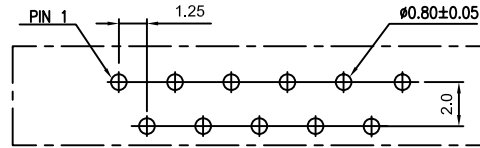
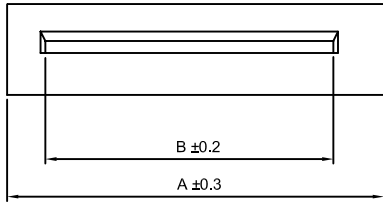
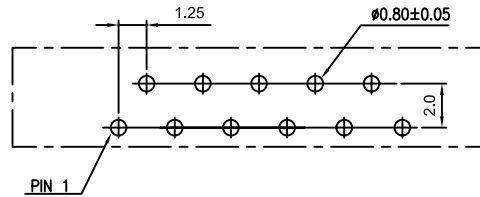


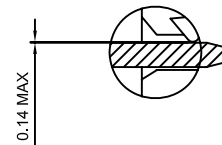
### Recommended P.C. Board Hole Layout



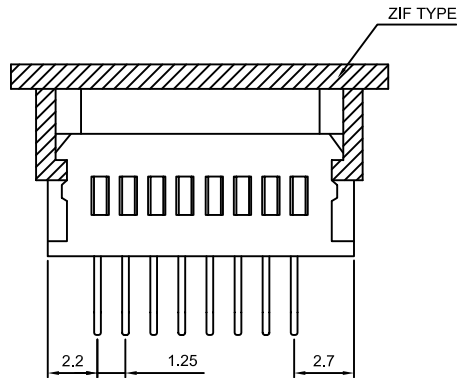
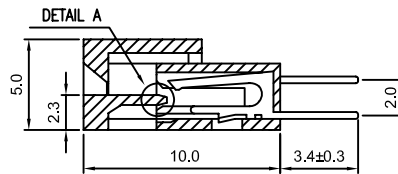
Normal Type



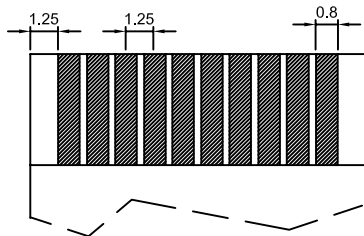
Reverse Type



DETAIL A CLOSE TYPE



FFC/FPC Dimension  
Thickness  $0.3 \pm 0.05$ mm



### Specifications

Current Rating: 1 Amp  
Dielectric Withstanding Voltage: 500 VAC Min.  
Insulation Resistance: 500 Megaohms Min.  
Contact Resistance: 20 Milliohms Max.  
Operating Temperature Range:  $-55^{\circ}\text{C}$  to  $85^{\circ}\text{C}$   
Insulator: Polyester, UL94V-0, PBT  
Contact: Phosphor Bronze  
Plating: All Tin, Lead Free  
Insulator Color: White

### Part Numbering System

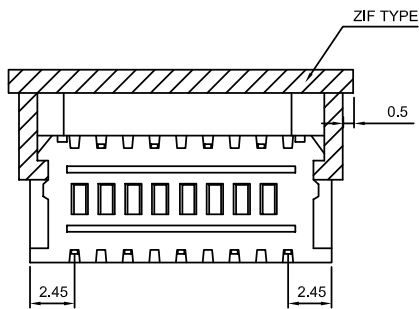
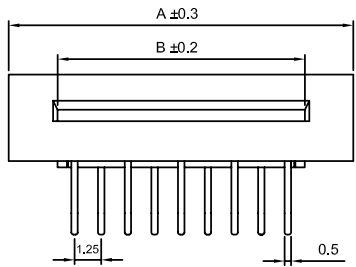
**FPCZ125 X - XX S D T**

**Series** \_\_\_\_\_  
**Contact Option:** \_\_\_\_\_  
N = Normal Type  
R = Reverse Type  
**No. of Pins** \_\_\_\_\_  
**Terminal Type:** \_\_\_\_\_  
S = Straight  
D = Dual Row  
**Contact Plated:** \_\_\_\_\_  
T = Tin Plated

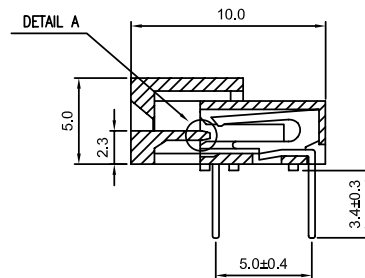
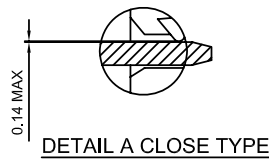
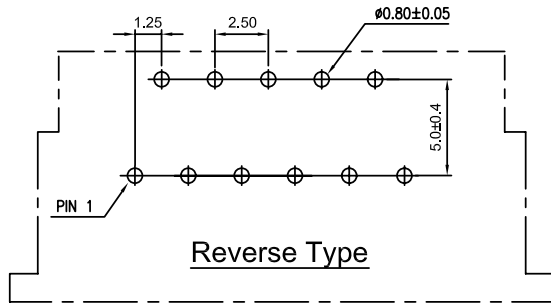
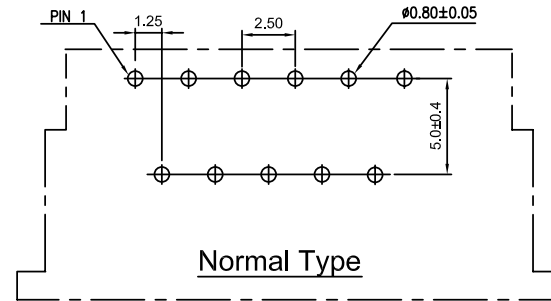
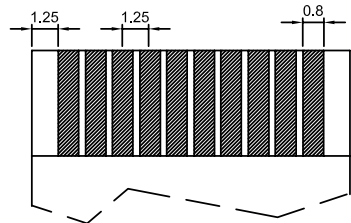
General Tolerance	
X. $\pm$ 0.50	X. $^{\circ}$ $\pm$ 5 $^{\circ}$
.X $\pm$ 0.20	.X $^{\circ}$ $\pm$ 2 $^{\circ}$
.XX $\pm$ 0.10	.XX $^{\circ}$ $\pm$ 1 $^{\circ}$
Units : mm	

#Pin	03	04	05	06	07	08	09	10	11	12	13	14	15	16	17	18	19	20	21	22	23	24	25	26	27	28	29	30	31	32
A	5.20	6.45	7.70	8.95	10.20	11.45	12.70	13.95	15.20	16.45	17.70	18.95	20.20	21.45	22.70	23.95	25.20	26.45	27.70	28.95	30.20	31.45	32.70	33.95	35.20	36.45	37.70	38.95	40.20	41.45
B	9.50	10.75	12.00	13.25	14.50	15.75	17.00	18.25	19.50	20.75	22.00	23.25	24.50	25.75	27.00	28.25	29.50	30.75	32.00	33.25	34.50	35.75	37.00	38.25	39.50	40.75	42.00	43.25	44.50	45.75

### Recommended P.C. Board Hole Layout



FFC/FPC Dimension  
Thickness 0.3±0.05mm



## Specifications

- Current Rating: 1 Amp
- Dielectric Withstanding Voltage: 500 VAC Min.
- Insulation Resistance: 500 Megaohms Min.
- Contact Resistance: 20 Milliohms Max.
- Operating Temperature Range: -55°C to 85°C
- Insulator: Polyester, UL94V-0, PBT
- Contact: Phosphor Bronze
- Plating: All Tin, Lead Free
- Insulator Color: White

## Part Numbering System

**FPCZ125 X - XX R D T**

- Series** \_\_\_\_\_
- Contact Option:** \_\_\_\_\_  
N = Normal Type  
R = Reverse Type
- No. of Pins** \_\_\_\_\_
- Terminal Type:** \_\_\_\_\_  
R = Right Angle
- Row Type:** \_\_\_\_\_  
D = Dual Row
- Contact Plated:** \_\_\_\_\_  
T = Tin Plated

General Tolerance	
X. ± 0.50	X.° ± 5°
.X ± 0.20	.X° ± 2°
.XX ± 0.10	.XX° ± 1°
Units : mm	

#Pin	03	04	05	06	07	08	09	10	11	12	13	14	15	16	17	18	19	20	21	22	23	24	25	26	27	28	29	30	31	32
A	5.20	6.45	7.70	8.95	10.20	11.45	12.70	13.95	15.20	16.45	17.70	18.95	20.20	21.45	22.70	23.95	25.20	26.45	27.70	28.95	30.20	31.45	32.70	33.95	35.20	36.45	37.70	38.95	40.20	41.45
B	9.50	10.75	12.00	13.25	14.50	15.75	17.00	18.25	19.50	20.75	22.00	23.25	24.50	25.75	27.00	28.25	29.50	30.75	32.00	33.25	34.50	35.75	37.00	38.25	39.50	40.75	42.00	43.25	44.50	45.75