

Pro Components

BHS-2MM SERIES 2.0mm PITCH (2.0 X 2.0mm) BOX HEADER SMD TYPE

MATERIAL:

Insulator: Nylon-6T, UL94V-0
Color: Black

Contacts: Brass, Gold Over Nickel Plated

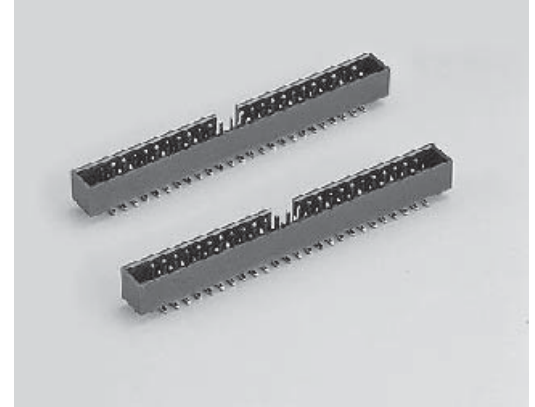
ELECTRICAL:

Current Rating: 1 Amp.

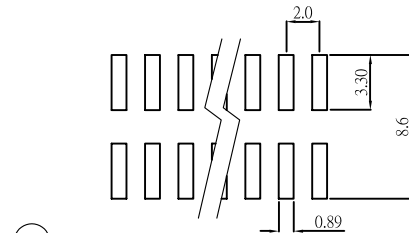
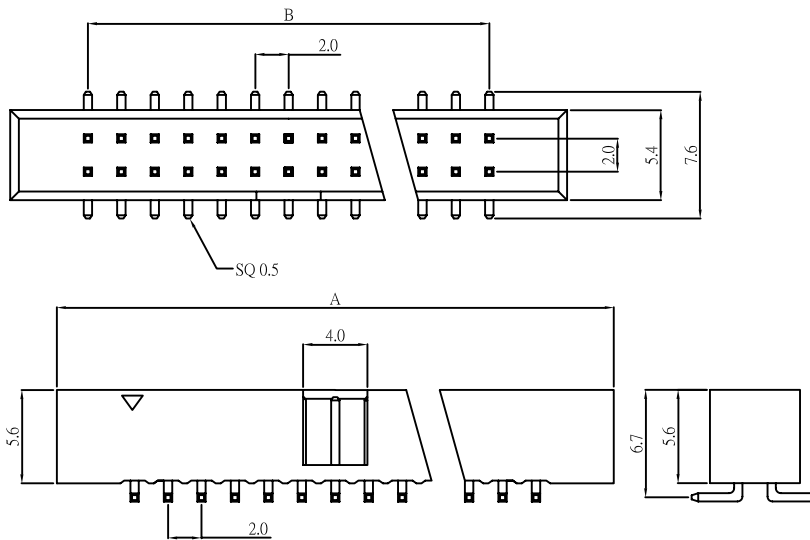
Insulator Resistance: 30 Milliohms Max.

Dielectric Withstanding: 500VAC.

Operating Temperature: -40°C ~ +105°C.



DIMENSIONS:



(A/I)

RECOMMENDED P.C. BOARD
SMD LAYOUT

POSITION	A	B
08	15.30	6.00
10	17.30	8.00
12	19.30	10.00
14	21.30	12.00
16	23.30	14.00
20	27.30	18.00
22	29.30	20.00
24	31.30	22.00
26	33.30	24.00
30	37.30	28.00
32	39.30	30.00
34	41.30	32.00
36	43.30	34.00
40	47.30	38.00
44	51.30	42.00
50	57.30	48.00
60	67.30	58.00
68	75.30	66.00

PART NUMBER:

