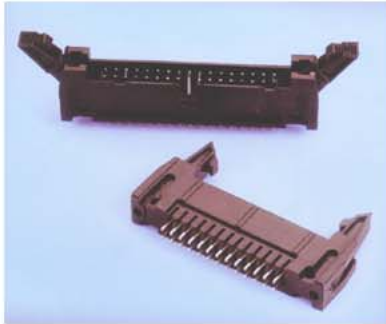


**LATCH HEADER**  
**I.D.C. HEADER CONNECTORS (2.54 x 2.54mm)**  
**MATES WITH I.D.C. SOCKET CONNECTORS (SEE FC SERIES)**



**FEATURES**

- Fully shrouded body provides maximum protection for contact pins.
- Snap on polarizing keys.
- Dip solder on wire wrap post tails.
- Available with long or short lock ejectors
- Requires on special tooling.
- Latch/Extractor option.

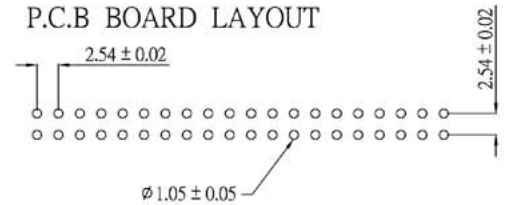
**MATERIAL**

Insulator: PBT +30% Glass Fiber (UL 94V-0)  
 Contact: Brass  
 Contact Plated: Gold Over Nickel

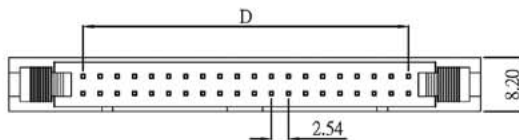
**SPECIFICATION**

Current Rating: 3 Amp  
 Dielectric Withstanding Voltage: 500V per Minute  
 Insulation Resistance: 500MΩ Min. at 500V  
 Contact Resistance: 10mΩ Min. at DC 1A  
 Operating Temperature: -55°C ~ +105°C

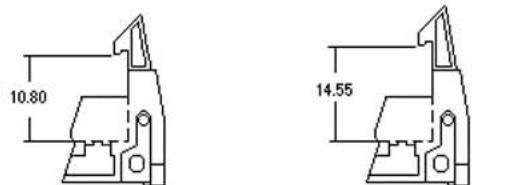
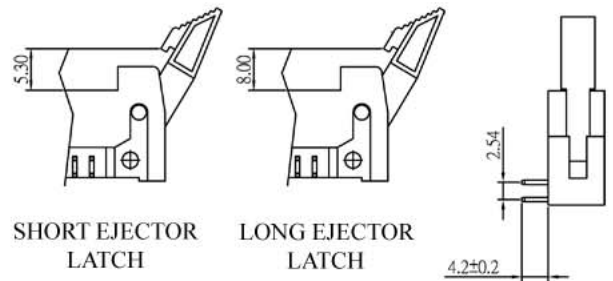
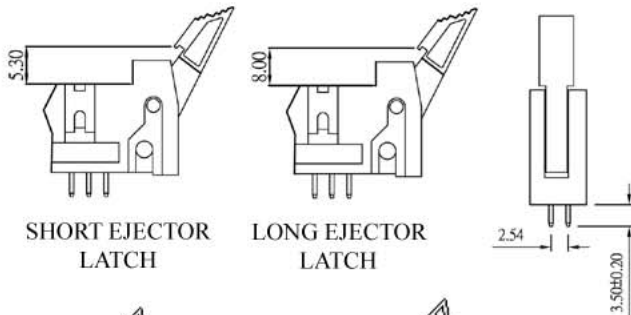
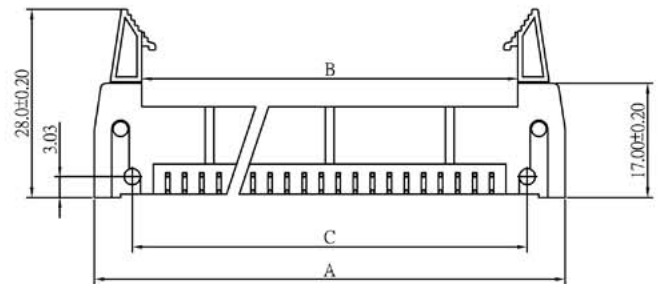
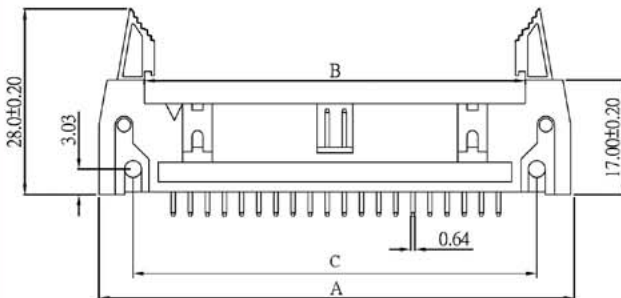
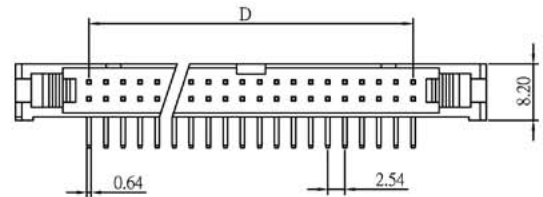
**P.C.B BOARD LAYOUT**



**STRAIGHT**



**RIGHT ANGLE**



SHORT EJECTOR LATCH (FOR MATING CONNECTOR WITHOUT STRAIN RELIEF)  
 LONG EJECTOR LATCH (FOR MATING CONNECTOR WITH STRAIN RELIEF)

**ORDERING INFORMATION:**

**STRAIGHT TYPE:**

LH - S - NO. OF PIN - CONTACT PLATING - LENGTH OF EJECTOR LATCH  
 G = GOLD FLASH NIL=LONG, S=SHORT

**RIGHT ANGLE TYPE:**

LH - R - NO. OF PIN - CONTACT PLATING - LENGTH OF EJECTOR LATCH  
 G = GOLD FLASH NIL=LONG, S=SHORT

**FOR EXAMPLE:**

LH-S-34-G (LONG EJECTOR LATCH)  
 LH-R-26-G-S (SHORT EJECTOR LATCH)

Circuits	Dimension			
	A	B	C	D
10	32.00	18.25	21.80	10.17
14	37.05	23.20	26.90	15.25
16	39.60	25.90	29.35	17.79
20	44.70	31.00	34.50	22.67
26	52.32	38.50	42.20	30.49
30	57.40	43.70	47.30	35.57
34	62.50	48.90	52.30	40.65
40	70.10	56.35	59.90	46.27
50	82.85	69.15	72.70	60.97
60	95.50	81.90	85.35	73.67
64	100.60	87.10	90.50	78.75