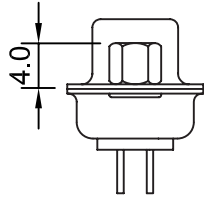
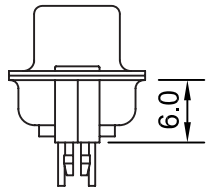


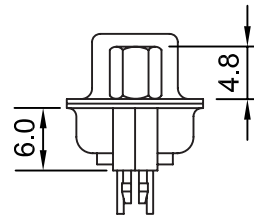
AA TYPE



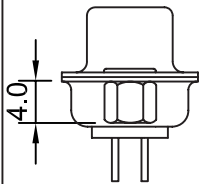
CA TYPE



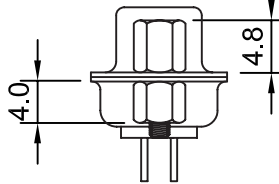
BA TYPE



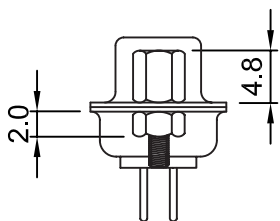
BB TYPE



DA TYPE

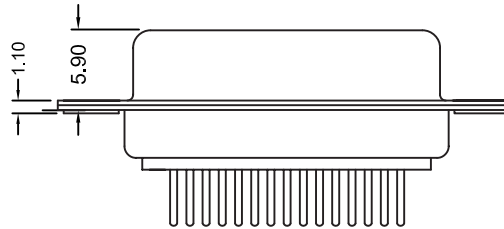
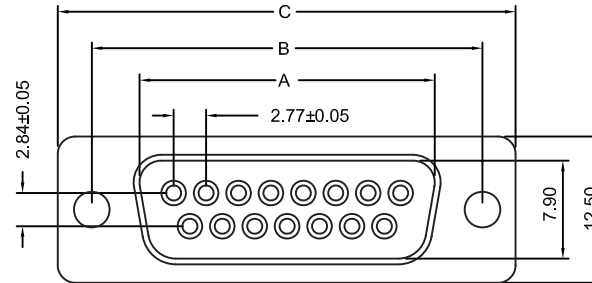


DB TYPE



GB TYPE

POSITION	A	B	C
9	16.33	24.99	30.81
15	24.66	33.62	39.14
19	29.92	39.03	44.80
23	35.18	44.36	50.30
25	38.38	47.04	53.04
37	54.84	63.50	69.32



Specifications

Current Rating: 3 Amp
 Operating Temp.: -55°C ~ +105°C
 Dielectric Strength : 1000V AC/min
 Insulation Resistance: 1000MΩ Min.
 Contact Resistance: 30 million hms Max.
 Insulator Material: PBT+30% Glass Fiber (UL94V-0)
 Contact: Brass
 Contact Plated: Selective Plating
 Shell: Steel, Nickel Plated
 Screw: Brass, Nickel Plated

Part Numbering System

DS02 - XX F X X X X X

Series

Insulator Color:

- 1 = White
- 2 = Blue
- 3 = Black

Parts Option:

- A = No Attachment
- B = Fixed Hex Screws 4.8mm
- C = Loose Hex Screws 4.8mm

Process Option:

- A = Though Hole
- B = Riveted Board Fork Lock 6.0
- C = Riveted 4.0 Hex Nut (Front)
- D = Riveted 4.0 Hex Nut (Rear)
- E = Riveted 6.0 Hex Nut (Rear)
- F = Riveted 6.0 Hex Nut (Front)
- G = Non-Riveted 2.0 Hex Nut (Rear)

Contact Number:
09 15 19 23 25 37 50

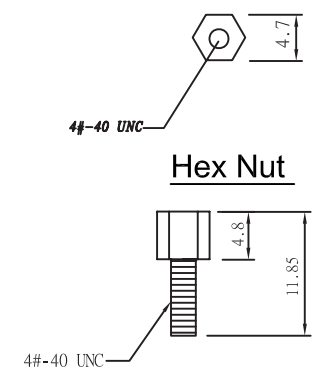
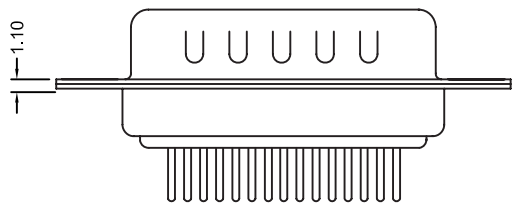
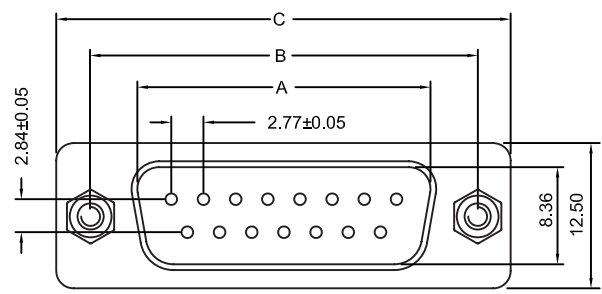
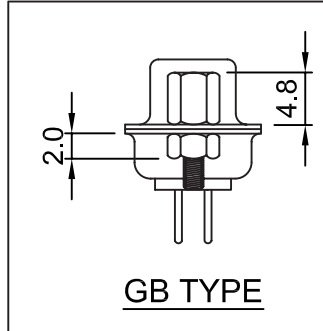
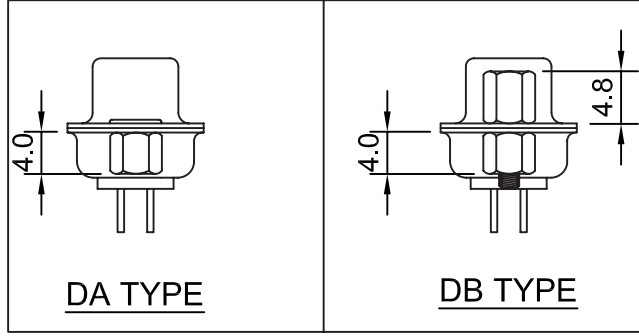
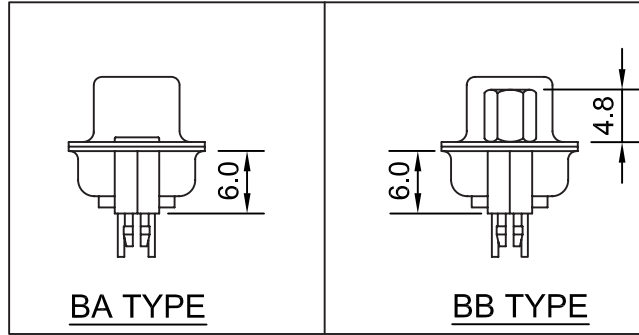
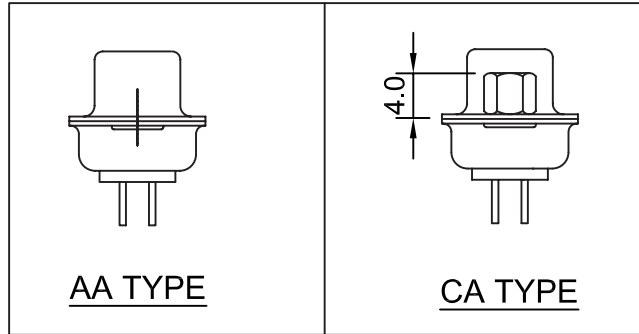
Contact Type:
F = Female

* Contact Plating:

Shell Plating:
T = Tin
N = Nickel (Standard)
Z = Zinc

* Contact Plating Option	Full Gold Plating	Gold Plated On Contact Area Tin Plated on Solder Area	Full Tin Plating
	G : Gold Flash G10: Gold 10u" G15: Gold 15u" G30: Gold 30u"	S: Gold Flash S10: Gold 10u" S15: Gold 15u" S30: Gold 30u"	T: Tin 100u"

General Tolerance	
X. ± 0.50	X.° ± 5°
.X ± 0.20	.X" ± 2'
.XX ± 0.10	.XX" ± 1'
Units : mm	



POSITION	A	B	C	D
9	16.92	24.99	30.81	19.28
15	25.25	33.62	39.14	27.51
19	30.60	39.03	44.80	33.02
23	35.90	44.36	50.30	38.15
25	38.96	47.04	53.04	41.30
37	55.42	63.50	69.32	57.71

* Contact Plating Option	Full Gold Plating	Gold Plated On Contact Area Tin Plated on Solder Area	Full Tin Plating
	G : Gold Flash G10: Gold 10u" G15: Gold 15u" G30: Gold 30u"	S: Gold Flash S10: Gold 10u" S15: Gold 15u" S30: Gold 30u"	T: Tin 100u"

Specifications

Current Rating: 3Amp
 Operating Temp.: -55°C ~ +105°C
 Dielectric Strength : 1000V AC/min
 Insulation Resistance: 1000MΩ Min.
 Contact Resistance: 30 million hms Max.
 Insulator Material: PBT+30% Glass Fiber (UL94V-0)
 Contact: Brass
 Contact Plated: Gold / Tin Plated
 Shell: Steel, Nickel Plated
 Screw: Brass, Nickel Plated

Part Numbering System

DS02 - XX M X X X X X

Series: DS02

Contact Number: XX
 09 15 19 23 25 37 50

Contact Type: M
 M = Male

*** Contact Plating**: X X X X X

Shell Plating: X
 T = Tin
 N = Nickel (Standard)
 Z = Zinc
 P = Tin + Dimple
 Q = Nickel + Dimple

Insulator Color:
 1 = White
 2 = Blue
 3 = Black

Parts Option:
 A = No Attachment
 B = Fixed Hex Screws 4.8mm
 C = Loose Hex Screws 4.8mm

Process Option:
 A = Though Hole
 B = Riveted Board Fork Lock 6.0
 C = Riveted 4.0 Hex Nut (Front)
 D = Riveted 4.0 Hex Nut (Rear)
 E = Riveted 6.0 Hex Nut (Rear)
 F = Riveted 6.0 Hex Nut (Front)
 G = Non-Riveted 2.0 Hex Nut (Rear)

General Tolerance	
X. ± 0.50	X.° ± 5°
.X ± 0.20	.X° ± 2°
.XX ± 0.10	.XX° ± 1°
Units : mm	