

Peaking Coils
Features :

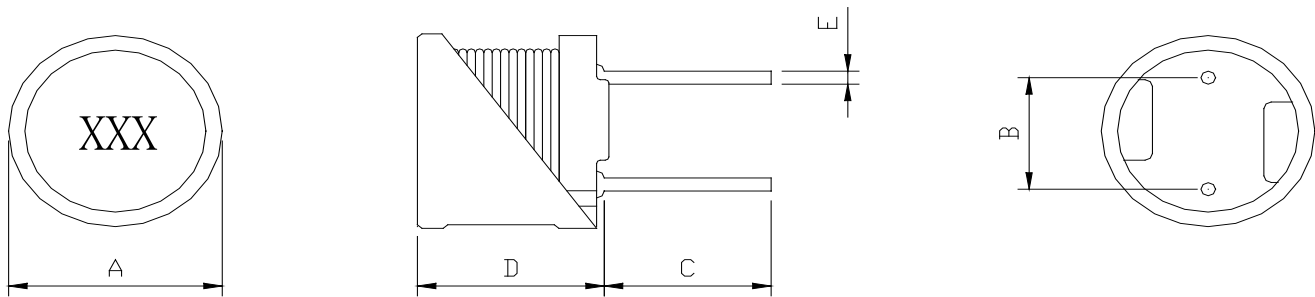
- Description: Radial leaded fixed inductor (PVC sleeved)
- Applications: Ideal as a choke coil for noise filtering and DC/DC converter applications. General applications.
- Operating Temperature: -55°C to +125°C
- Temperature Coefficient: 440ppm / °C max.
- Inductance Tolerance: ±10%, ±20%
- Testing: Inductance and Q are tested on an HP4284A at specified frequency.
- Packaging: Bulk pack; packaged in styrofoam.
- Marking: PVC sleeving marked with inductance code.
- Additional info available upon request.
- Optional UL sleeved, add "U" after tolerance code.

Part Number	Inductance (µH)	L Test Freq.	DCR Max. (Ohm)	Rated DC (A)
AX822LY-100_	10	2.52 MHz	0.04	2.60
AX822LY-120_	12	2.52 MHz	0.04	2.60
AX822LY-150_	15	2.52 MHz	0.05	2.10
AX822LY-180_	18	2.52 MHz	0.05	2.00
AX822LY-220_	22	2.52 MHz	0.06	1.70
AX822LY-270_	27	2.52 MHz	0.06	1.60
AX822LY-330_	33	2.52 MHz	0.07	1.40
AX822LY-390_	39	2.52 MHz	0.08	1.40
AX822LY-470_	47	2.52 MHz	0.10	1.30
AX822LY-560_	56	2.52 MHz	0.11	1.20
AX822LY-680_	68	2.52 MHz	0.14	1.10
AX822LY-820_	82	2.52 MHz	0.16	1.00
AX822LY-101_	100	1.0 KHz	0.19	0.90
AX822LY-121_	120	1.0 KHz	0.22	0.82
AX822LY-151_	150	1.0 KHz	0.27	0.74
AX822LY-181_	180	1.0 KHz	0.31	0.71
AX822LY-221_	220	1.0 KHz	0.38	0.64
AX822LY-271_	270	1.0 KHz	0.53	0.57
AX822LY-331_	330	1.0 KHz	0.61	0.51
AX822LY-391_	390	1.0 KHz	0.69	0.48
AX822LY-471_	470	1.0 KHz	0.89	0.43
AX822LY-561_	560	1.0 KHz	1.01	0.40
AX822LY-681_	680	1.0 KHz	1.18	0.35
AX822LY-821_	820	1.0 KHz	1.57	0.32
AX822LY-102_	1000	1.0 KHz	1.84	0.30
AX822LY-122_	1200	1.0 KHz	2.10	0.27
AX822LY-152_	1500	1.0 KHz	2.80	0.23
AX822LY-182_	1800	1.0 KHz	3.21	0.21
AX822LY-222_	2200	1.0 KHz	4.21	0.19
AX822LY-272_	2700	1.0 KHz	4.94	0.17
AX822LY-332_	3300	1.0 KHz	6.16	0.15

└─ Tolerance Code **K= ±10%, M= ±20%**

Part Number	Inductance (μH)	L Test Freq.	DCR Max. (Ohm)	Rated DC (A)
AX822LY-392_	3900	1.0 KHz	6.84	0.14
AX822LY-472_	4700	1.0 KHz	7.89	0.13
AX822LY-562_	5600	1.0 KHz	11.50	0.12
AX822LY-682_	6800	1.0 KHz	13.20	0.11
AX822LY-822_	8200	1.0 KHz	15.20	0.10
AX822LY-103_	10000	1.0 KHz	22.00	0.089
AX822LY-123_	12000	1.0 KHz	25.00	0.073
AX822LY-153_	15000	1.0 KHz	29.10	0.068
AX822LY-183_	18000	1.0 KHz	38.90	0.066
AX822LY-223_	22000	1.0 KHz	44.90	0.059
AX822LY-273_	27000	1.0 KHz	55.70	0.052
AX822LY-333_	33000	1.0 KHz	64.20	0.048
AX822LY-393_	39000	1.0 KHz	74.20	0.042
AX822LY-473_	47000	1.0 KHz	96.40	0.038

— Tolerance Code K= ±10%, M= ±20%

Dimensions :


Size	A Max.	B	C	D Max.	E Max.
mm	8.3	5.01±0.3	5.0±0.5	9.5	0.65±0.1