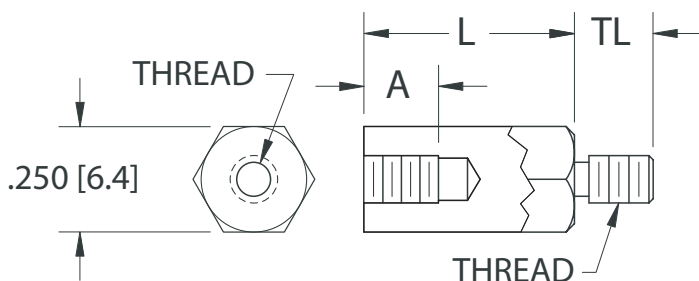


## Part Numbering System

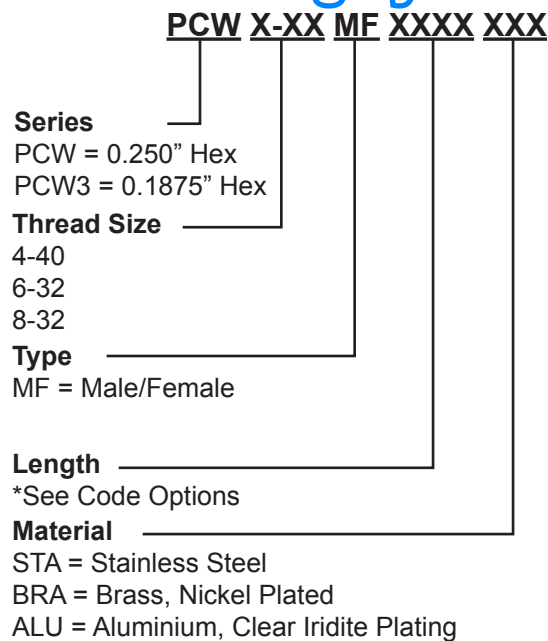


Dimensions		
Thread Size	TL	A
4-40	0.187" (4.7mm)	0.250" (6.4mm)
6-32	0.250" (6.4mm)	0.375" (9.5mm)
8-32	0.375" (9.5mm)	0.375" (9.5mm)

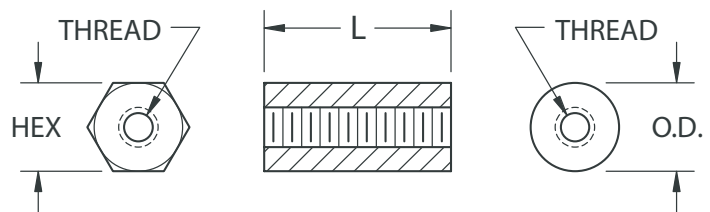
Code	Length	Thread Size		
	L	4-40	6-32	8-32
*0.250	0.250" (6.4mm)	✓	✓	✓
**0.375	0.375" (9.5mm)	✓	✓	✓
0.500	0.500" (12.7mm)	✓	✓	✓
0.562	0.5625" (14.3mm)	✓	-	-
0.600	0.600" (15.3mm)	✓	-	-
0.625	0.625" (15.9mm)	✓	✓	✓
0.750	0.750" (19.1mm)	✓	✓	✓
0.875	0.875" (22.2mm)	✓	✓	✓
1.000	1.000" (25.4mm)	✓	✓	✓
1.125	1.125" (28.6mm)	✓	✓	✓
1.250	1.250" (31.8mm)	✓	✓	✓
1.375	1.375" (34.9mm)	✓	✓	✓
1.500	1.500" (38.1mm)	✓	✓	✓
1.625	1.625" (41.3mm)	✓	✓	✓
1.750	1.750" (44.5mm)	✓	✓	✓
2.000	2.000" (50.8mm)	✓	✓	✓
2.500	2.500" (63.5mm)	-	-	✓
3.000	3.000" (76.2mm)	-	-	✓

\* Internal Thread 0.130" (3.3mm) / 0.150" (3.8mm) Deep

\*\* Internal Thread 0.250" (6.4mm) Deep (6-32 & 8-32 Thread Size Only).



Code	Length	O.D.	Hex			Round			
			STA	BRA	ALU	BRA	ALU	PHE	
<b>2-56 Thread</b>									
0.187	0.187" (4.7mm)	0.156" (3.9mm)	-	✓	✓	✓	✓	-	
0.250	0.250" (6.4mm)		-	✓	✓	✓	✓	-	
0.312	0.312" (7.9mm)		-	✓	✓	✓	✓	-	
0.375	0.375" (9.5mm)		-	✓	✓	✓	✓	-	
<b>4-40 Thread</b>									
0.250S	0.250" (6.4mm)	0.187" (4.7mm)	-	✓	✓	✓	✓	-	
0.375S	0.375" (9.5mm)		-	✓	✓	✓	✓	-	
0.500S	0.500" (12.7mm)		-	✓	✓	✓	✓	-	
0.562S	0.5625" (14.3mm)		-	✓	✓	✓	✓	-	
0.625S	0.625" (15.9mm)		-	✓	✓	✓	✓	-	
0.750S	0.750" (19.1mm)		-	✓	✓	✓	✓	-	
0.875S	0.875" (22.2mm)		-	✓	✓	✓	✓	-	
1.000S	1.000" (25.4mm)		-	✓	✓	✓	✓	-	
0.156Q	0.156" (3.9mm)		✓	✓	✓	-	-	-	
0.250Q	0.250" (6.4mm)		-	✓	✓	✓	✓	-	
0.312Q	0.312" (7.9mm)	✓	✓	✓	-	-	-		
0.375Q	0.375" (9.5mm)	✓	✓	✓	✓	✓	✓		
0.500Q	0.500" (12.7mm)	✓	✓	✓	✓	✓	✓		
0.625Q	0.625" (15.9mm)	-	✓	✓	✓	✓	-		
0.750Q	0.750" (19.1mm)	✓	✓	✓	✓	✓	✓		
0.875Q	0.875" (22.2mm)	-	✓	✓	✓	✓	-		
1.000Q	1.000" (25.4mm)	✓	✓	✓	✓	✓	✓		
1.500Q	1.500" (38.1mm)	✓	✓	✓	✓	✓	✓		
2.000Q	2.000" (50.8mm)	✓	✓	✓	✓	✓	✓		
<b>6-32 Thread</b>									
0.156	0.156" (3.9mm)	0.250" (6.4mm)	✓	✓	✓	-	-	-	
0.250	0.250" (6.4mm)		✓	✓	✓	✓	✓	✓	
0.312	0.312" (7.9mm)		✓	✓	✓	-	-	-	
0.375	0.375" (9.5mm)		✓	✓	✓	✓	✓	✓	
0.500	0.500" (12.7mm)		✓	✓	✓	✓	✓	✓	
0.625	0.625" (15.9mm)		-	✓	✓	✓	✓	-	
0.750	0.750" (19.1mm)		✓	✓	✓	✓	✓	✓	
0.875	0.875" (22.2mm)		-	✓	✓	✓	✓	-	
1.000	1.000" (25.4mm)		✓	✓	✓	✓	✓	✓	
1.250	1.250" (31.8mm)		-	✓	✓	✓	✓	-	
1.500	1.500" (38.1mm)		✓	✓	✓	✓	✓	✓	
1.750	1.750" (44.5mm)		-	✓	✓	✓	✓	-	
2.000	2.000" (50.8mm)		✓	✓	✓	✓	✓	✓	
2.250	2.250" (57.2mm)		-	✓	✓	✓	✓	-	
2.500	2.500" (63.5mm)		-	✓	✓	✓	✓	-	
<b>8-32 Thread</b>									
0.250	0.250" (6.4mm)		0.250" (6.4mm)	✓	✓	✓	✓	✓	✓
0.375	0.375" (9.5mm)			✓	✓	✓	✓	✓	✓
0.500	0.500" (12.7mm)	✓		✓	✓	✓	✓	✓	
0.625	0.625" (15.9mm)	-		✓	✓	✓	✓	-	
0.750	0.750" (19.1mm)	✓		✓	✓	✓	✓	✓	
0.875	0.875" (22.2mm)	-		✓	✓	✓	✓	-	
1.000	1.000" (25.4mm)	✓		✓	✓	✓	✓	✓	
1.500	1.500" (38.1mm)	✓		✓	✓	✓	✓	✓	
2.000	2.000" (50.8mm)	✓		✓	✓	✓	✓	✓	



## Part Numbering System

**PCW X-XX F X XXXX XXX**

- Series**
  - 2-56
  - 4-40
  - 6-32
  - 8-32
  - 10-32
- Type**
  - F = Female
- Shape**
  - H = Hex
  - R = Round
- Length**
  - \*See Code Options
- Material**
  - STA = Stainless Steel
  - BRA = Brass
  - BRZ = Brass, Zinc Plated
  - ALU = Aluminium, Clear Iridite Plating
  - PHE = PBE Grade Natural Color Phenolic

Code	Length	O.D.	Hex			Round		
			STA	BRA	ALU	BRA	ALU	PHE
<b>10-32 Thread</b>								
0.375	0.375" (9.5mm)	0.312" (7.9mm)	✓	✓	✓	✓	✓	✓
0.500	0.500" (12.7mm)		✓	✓	✓	✓	✓	✓
0.625	0.625" (15.9mm)		✓	✓	✓	✓	✓	-
0.750	0.750" (19.1mm)		✓	✓	✓	✓	✓	✓
1.000	1.000" (25.4mm)		✓	✓	✓	✓	✓	✓

NOTE: All standoffs over 1.000" (25.4mm) are tapped 0.375" (9.5mm) min. both ends, except 4-40 standoffs which are tapped 0.250" (6.4mm) min.