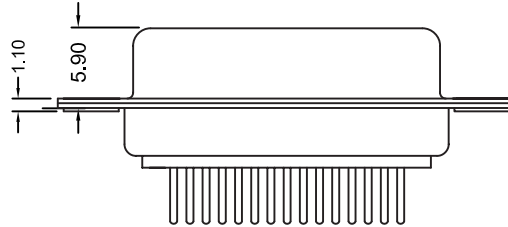
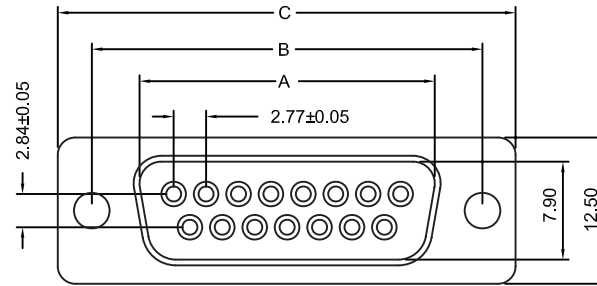


POSITION	A	B	C
9	16.33	24.99	30.81
15	24.66	33.62	39.14
19	29.92	39.03	44.80
23	35.18	44.36	50.30
25	38.38	47.04	53.04
37	54.84	63.50	69.32



Specifications

- Current Rating: 5 Amp
- Operating Temp.: -55°C ~ +105°C
- Dielectric Strength : 1000V / minute
- Insulation Resistance: 1000MΩ Min. at 500V DC
- Contact Resistance: 30 million hms Max.
- Insulator Material: PBT+30% Glass Fiber (UL94V-0)
- Contact: Brass
- Contact Plated: Selective Gold Flash (Standard),
Gold Plated On Contact Area,
Tin Plated on Solder Area
- Shell: Steel, Nickel Plated (Standard)
- Screw: Brass, Nickel Plated

Part Numbering System

DS02 - XX F X X X X X

Series

Insulator Color:

- 1 = White
- 2 = Blue
- 3 = Black

Contact Number:
09 15 19 23 25 37 50

Contact Type:
F = Female

Contact Plating:
G = Gold Flash
S = Selective Gold Flash (Standard)

Shell Plating:
N = Nickel (Standard)
T = Tin
Z = Zinc

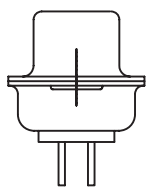
Parts Option:

- A = No Accessories
- B = Fixed Jack Screws 4.8x11.8mm
- C = Loose Jack Screws 4.8x10.8mm (In Poly Bag)
- D = Loose Jack Screws 4.8x11.8mm (In Poly Bag)
- E = Fixed Jack Screws 5.8x10.8mm
- F = Loose Jack Screws 5.8x10.8mm (In Poly Bag)

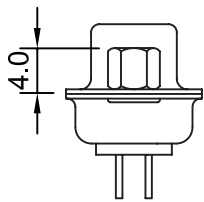
Process Option:

- A = Though Hole
- B = Riveted Board Fork Lock 6.0mm
- C = Riveted 4.0 Hex Nut (Front)
- D = Riveted 4.0 Hex Nut (Rear)
- E = Riveted 6.0 Hex Nut (Front)
- F = Riveted 6.0 Hex Nut (Rear)
- G = Non-Riveted 2.0 Hex Nut (Rear)

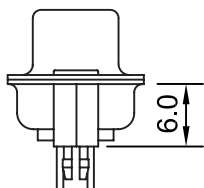
General Tolerance	
X. ± 0.50	X.° ± 5°
.X ± 0.20	.X° ± 2°
.XX ± 0.10	.XX° ± 1°
Units : mm	



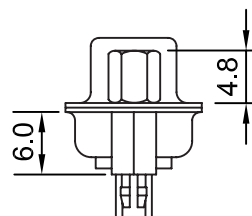
AA TYPE



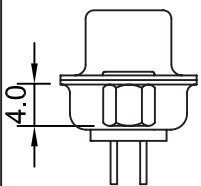
CA TYPE



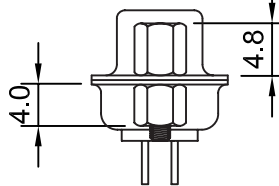
BA TYPE



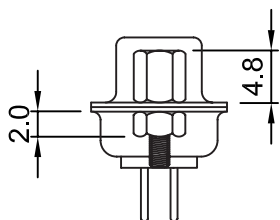
BB TYPE



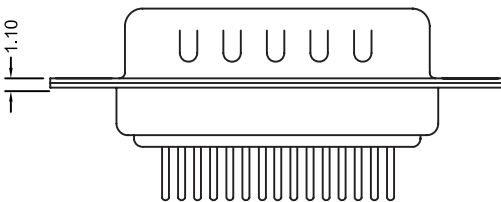
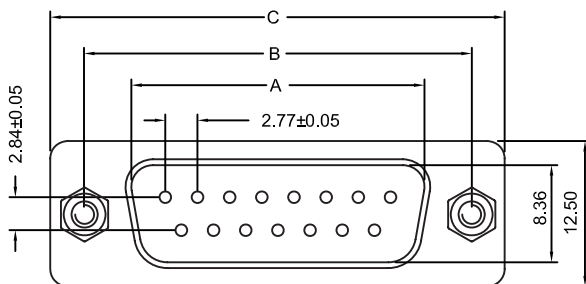
DA TYPE



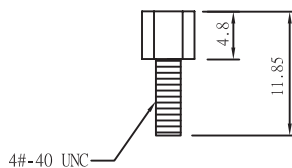
DB TYPE



GB TYPE



Hex Nut



Jack Screw

Specifications

Current Rating: 5 Amp
 Operating Temp.: -55°C ~ +105°C
 Dielectric Strength : 1000V / minute
 Insulation Resistance: 1000MΩ Min. at 500V DC
 Contact Resistance: 30 million hms Max.
 Insulator Material: PBT+30% Glass Fiber (UL94V-0)
 Contact: Brass
 Contact Plated: Selective Gold Flash (Standard),
 Gold Plated On Contact Area,
 Tin Plated on Solder Area
 Shell: Steel, Nickel Plated (Standard)
 Screw: Brass, Nickel Plated

Part Numbering System

DS02 - XX M X X X X X

Series

Insulator Color:

- 1 = White
- 2 = Blue
- 3 = Black

Parts Option:

- A = No Accessories
- B = Fixed Jack Screws 4.8x11.8mm
- C = Loose Jack Screws 4.8x10.8mm (In Poly Bag)
- D = Loose Jack Screws 4.8x11.8mm (In Poly Bag)
- E = Fixed Jack Screws 5.8x10.8mm
- F = Loose Jack Screws 5.8x10.8mm (In Poly Bag)

Process Option:

- A = Though Hole
- B = Riveted Board Fork Lock 6.0mm
- C = Riveted 4.0 Hex Nut (Front)
- D = Riveted 4.0 Hex Nut (Rear)
- E = Riveted 6.0 Hex Nut (Front)
- F = Riveted 6.0 Hex Nut (Rear)
- G = Non-Riveted 2.0 Hex Nut (Rear)

Contact Number:
09 15 19 23 25 37 50

Contact Type:
M = Male

Contact Plating:
G = Gold Flash
S = Selective Gold Flash (Standard)

Shell Plating:
T = Tin
N = Nickel (Standard)
Z = Zinc
P = Tin + Dimple
Q = Nickel + Dimple

POSITION	A	B	C	D
9	16.92	24.99	30.81	19.28
15	25.25	33.62	39.14	27.51
19	30.60	39.03	44.80	33.02
23	35.90	44.36	50.30	38.15
25	38.96	47.04	53.04	41.30
37	55.42	63.50	69.32	57.71

General Tolerance	
X. ± 0.50	X.° ± 5°
.X ± 0.20	.X° ± 2°
.XX ± 0.10	.XX° ± 1°
Units : mm	