

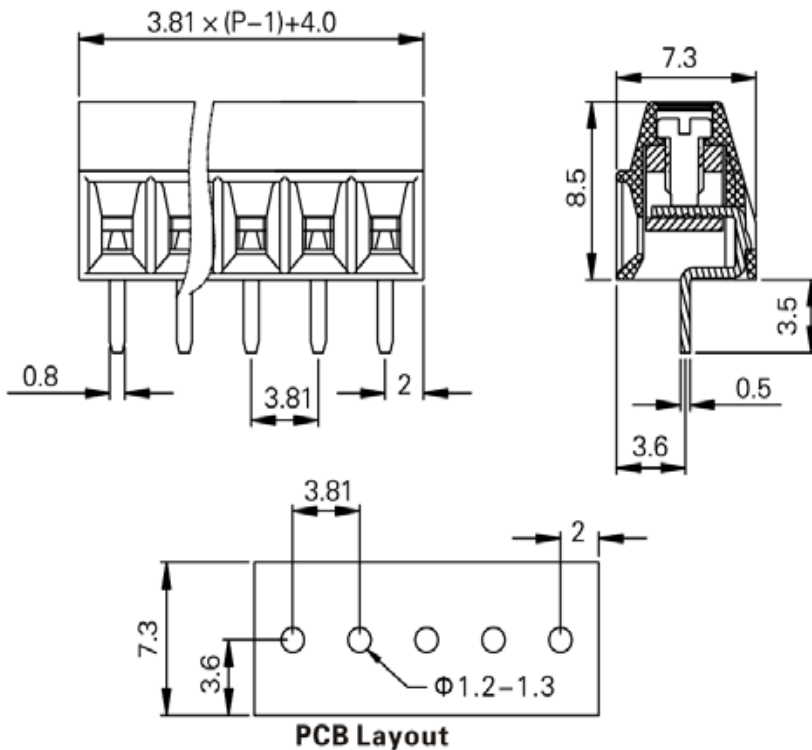


3.81mm Pitch



		
Rated Voltage	300V	160V
Rated Current	10A	10A
Withstand Voltage	AC 2000V / Min.	
Insulation Resistance	500MΩ or More at DC500V	
Temperature Range	-40°C to +105°C	
Wire Range	26-16AWG Sol & Str.	0.2-1.5mm ²
Wire Clamp Screw	M2.0	
Wire Strip Length	5.5mm	
Screw Torque Value	0.25N.m Max.	
Wave Soldering	260°C 5 sec Max (Single Wave) 260°C 10 sec Max. (Double Wave)	

Units: mm



Housing: PA66, UL94V-0
Pin: Copper Alloy, Tin Plated

Part Numbering System:

103-381V - XXP - XXX - X

① ② ③ ④

- ① Series
- ② Number of Poles: 02, 03, 04, ..., 24
- ③ Insulator Color: GRN = Green
- ④ Screw: S = Slot, C = Cross