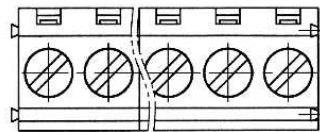
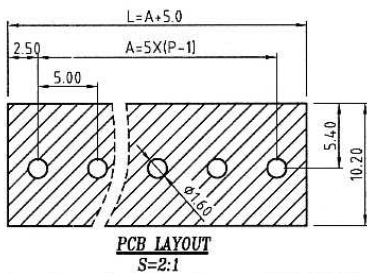


5.00mm Pitch

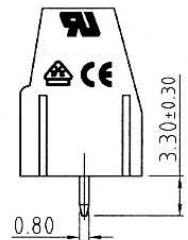
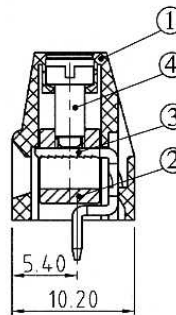
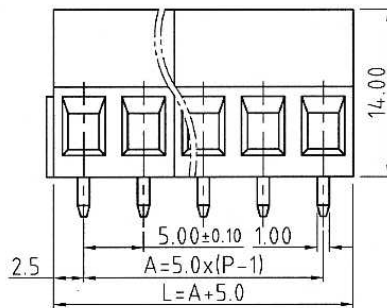
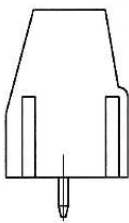


Rated Voltage	300V	320V
Rated Current	20A	24A
Insulation Withstand Voltage	AC 2000V / Min	
Insulation Resistance	500MΩ or More at DC500V	
Temperature Range	-40°C to +120°C	
Wire Range	24-12 AWG	0.2-2.5mm ²
Wire Strip Length	5.8 - 6.2mm	
Screw Torque	0.4Nm	

Units: mm



- ① Housing: PA66(V0)
- ② Block: Brass, Nickel Plated
- ③ Solder Pin: Brass, Tin Plated
- ④ Screw: Steel, Zinc Plated



Part Numbering System:

106-500V - XXP - XXX

① ② ③

① Series

② Number of Poles: 02, 03, 04, ..., 24

③ Insulator Color: GRN = Green, BLK = Black, ORG = Orange

# Pin	2	3	4	5	6	7	8	9	10	11	12	13
Dim L	10	15	20	25	30	35	40	45	50	55	60	65
Dim A	5	10	15	20	25	30	35	40	45	50	55	60
# Pin	14	15	16	17	18	19	20	21	22	23	24	
Dim L	70	75	80	85	90	95	100	105	110	115	120	
Dim A	65	70	75	80	85	90	95	100	105	110	115	