



Connectors > PCB Connectors > Wire-to-Board Connectors > FFC, FPC & Ribbon Connectors > FPC Connectors



Centerline (Pitch): 1 mm [.039 in]
Mating Retention Type: Non ZIF
PCB Mount Orientation: Vertical
Termination Method to PCB: Surface Mount
Contact Mating Area Plating Material: Tin (Sn)

Features

Product Type Features

Connector & Contact Terminates To	Flexible Printed Circuit (FPC), Printed Circuit Board
Connector Product Type	Connector Assembly
Connector System	Flex-to-Board
PCB Connector Type	PCB Mount Receptacle

Configuration Features

Compatible With Wire & Cable Type	FFC, FPC
Number of Rows	1
PCB Mount Orientation	Vertical
Number of Positions	6

Electrical Characteristics

Operating Voltage	125 VAC
-------------------	---------

Body Features

Primary Product Color	Natural
-----------------------	---------



Contact Features

PCB Contact Termination Area Plating Material Finish	Matte
Contact Mating Area Plating Material Thickness	1 μm[39.37 μin]
Contact Current Rating (Max)	1 A
Contact Shape & Form	Single Beam
PCB Contact Termination Area Plating Material Thickness	1 μm[39.37 μin]
Contact Layout	Staggered Type A
Contact Base Material	Phosphor Bronze
PCB Contact Termination Area Plating Material	Tin
Contact Type	Socket
Contact Mating Area Plating Material Finish	Matte
Contact Mating Area Plating Material	Tin (Sn)

Termination Features

Termination Method to PCB	Surface Mount
---------------------------	---------------

Mechanical Attachment

Connector Mounting Type	Board Mount
PCB Mount Retention	Without
Mating Alignment	With
PCB Mount Alignment	Without
Mating Retention Type	Non ZIF

Housing Features

Housing Material	Nylon GF
Centerline (Pitch)	1 mm [.039 in]

Dimensions

Accepts Flex Cable Thickness	.3 mm [.012 in]
Connector Width	4 mm [.157 in]
Connector Height	5.6 mm [.22 in]
Connector Length	7 mm [.314 in]

Usage Conditions

Operating Temperature Range	-20 – 85 °C[-4 – 185 °F]
-----------------------------	--------------------------

Operation/Application

Circuit Application	Signal
---------------------	--------



Identification Marking

Circuit Identification Feature	With
--------------------------------	------

Packaging Features

Packaging Quantity	800
Packaging Method	Tape & Reel

Product Compliance

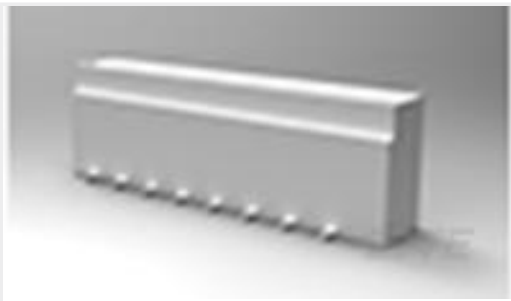
For compliance documentation, visit the product page on TE.com>

EU RoHS Directive 2011/65/EU	Compliant
EU ELV Directive 2000/53/EC	Compliant
China RoHS 2 Directive MIIT Order No 32, 2016	No Restricted Materials Above Threshold
EU REACH Regulation (EC) No. 1907/2006	Current ECHA Candidate List: JAN 2025 (247) Candidate List Declared Against: JAN 2025 (247) Does not contain REACH SVHC
Halogen Content	Not Low Halogen - contains Br or Cl > 900 ppm.
Solder Process Capability	Reflow solder capable to 245°C

Product Compliance Disclaimer

This information is provided based on reasonable inquiry of our suppliers and represents our current actual knowledge based on the information they provided. This information is subject to change. The part numbers that TE has identified as EU RoHS compliant have a maximum concentration of 0.1% by weight in homogenous materials for lead, hexavalent chromium, mercury, PBB, PBDE, DBP, BBP, DEHP, DIBP, and 0.01% for cadmium, or qualify for an exemption to these limits as defined in the Annexes of Directive 2011/65/EU (RoHS2). Finished electrical and electronic equipment products will be CE marked as required by Directive 2011/65/EU. Components may not be CE marked. Additionally, the part numbers that TE has identified as EU ELV compliant have a maximum concentration of 0.1% by weight in homogenous materials for lead, hexavalent chromium, and mercury, and 0.01% for cadmium, or qualify for an exemption to these limits as defined in the Annexes of Directive 2000/53/EC (ELV). Regarding the REACH Regulation, the information TE provides on SVHC in articles for this part number is based on the latest European Chemicals Agency (ECHA) ‘Guidance on requirements for substances in articles’ posted at this URL: <https://echa.europa.eu/guidance-documents/guidance-on-reach>

Compatible Parts

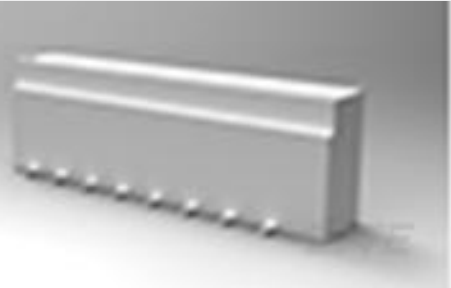


TE Part # 84982-6
1MM FFC SMT V ASSY 6P EMBOSS

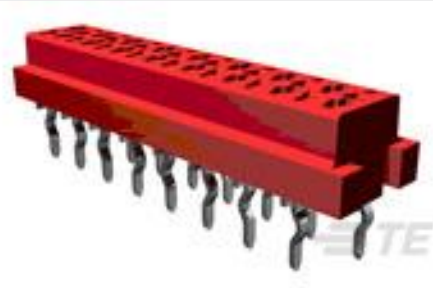
Customers Also Bought



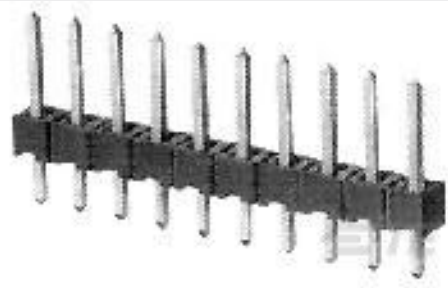
TE Part #DRC13-40PA
HDR, 40P, BLK, RA, 1032 FLG, SN/NI /CU, A



TE Part #84982-4
1MM FFC SMT V ASSY 4P EMBOSS



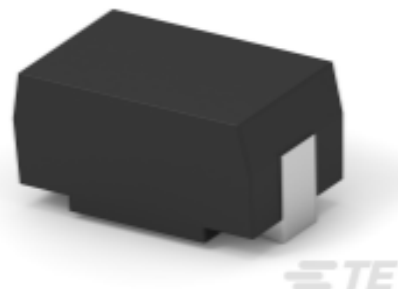
TE Part #1-215079-8
MICRO-MATCH FOB 18P



TE Part #826629-5
AMPMODU II HEADER



TE Part #1318751-7
025/090 80POS CAP ASSY



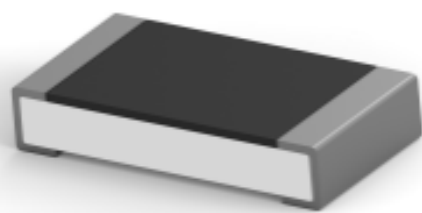
TE Part #CAT-C339-SM1
SMD Power Resistor: 7 Watt, 200-2M Ohm



TE Part #1735042-8
1MM FFC SMT V ASSY 8P EMBOSS



TE Part #2-1879021-5
SMW3 1R0 5%



TE Part #1-2176388-3
RQ 1206 13R3 0.1% 10PPM 5K RL

Documents

Product Drawings

1MM FFC SMT V ASSY 6P EMBOSS

English

CAD Files

3D PDF

3D

Customer View Model

ENG_CVM_CVM_1735042-6_M.2d_dxf.zip



English

Customer View Model
[ENG_CVM_CVM_1735042-6_M.3d_igs.zip](#)

English

Customer View Model
[ENG_CVM_CVM_1735042-6_M.3d_stp.zip](#)

English

By downloading the CAD file I accept and agree to the [Terms and Conditions](#) of use.

Datasheets & Catalog Pages
[1-1773959-7-FPC-Connectors-CN](#)

English

Product Specifications
[Product Specification](#)

English