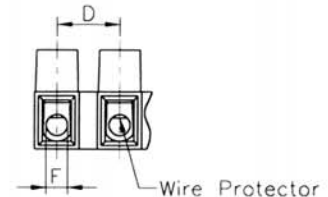
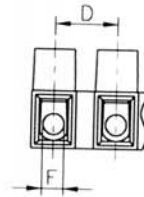
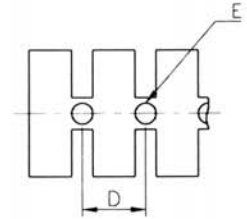
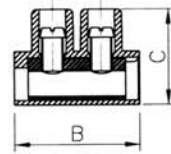
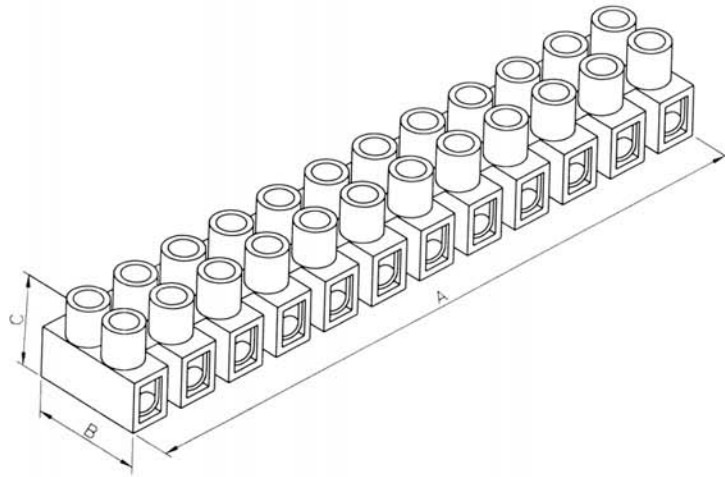


TERMINAL BLOCKS (Flat Base)



WT10F-03WP
 Series: WT10F, Pitch: 10, # of poles: 3, Nil: w/o Wire Protector, WP: with Wire Protector, Style F: Flat Base

Dimensions & Data :

| Part # | mm ² | Amp | Volt. | Screw | Dimensions (mm/in.) | | | | | | | Packing |
|------------|-----------------|-------|-------|--------|---------------------|-------|-------|-------|-------|-------|---------|--------------|
| | | | | | Unit | A | B | C | D | E | F | |
| WT8F-□□ | 1.5 | 17.5A | 450V | M2.6×5 | (mm) | 95.80 | 16.30 | 13.30 | 8.00 | 2.90 | 2.8±0.1 | 50 Pcs/Bag. |
| | | | | | (in) | 3.772 | 0.642 | 0.524 | 0.315 | 0.114 | 0.110 | 500 Pcs/Bag. |
| WT8F-□□WP | 1.5 | 17.5A | 450V | M2.6×5 | (mm) | 95.80 | 16.30 | 13.30 | 8.00 | 2.90 | 2.8±0.1 | 50 Pcs/Bag. |
| | | | | | (in) | 3.772 | 0.642 | 0.524 | 0.315 | 0.114 | 0.110 | 500 Pcs/Bag. |
| WT10F-□□ | 2.5 | 24A | 450V | M3×6 | (mm) | 117.0 | 20.20 | 15.80 | 10.00 | 3.60 | 3.2±0.1 | 50 Pcs/Bag. |
| | | | | | (in) | 4.626 | 0.795 | 0.622 | 0.394 | 0.142 | 0.126 | 500 Pcs/Bag. |
| WT10F-□□WP | 2.5 | 24A | 450V | M3×6 | (mm) | 117.0 | 20.20 | 15.80 | 10.00 | 3.60 | 3.2±0.1 | 50 Pcs/Bag. |
| | | | | | (in) | 4.626 | 0.795 | 0.622 | 0.394 | 0.142 | 0.126 | 500 Pcs/Bag. |

Description :

- * Base : With flat base.
- * Material : Polyamide 66 (Nylon 66), UL 94V2, Natural.
- * Working Temperature : 110°C.
- * Number of Poles : 12 poles.
- * Terminal Insert : Brass metal alloy, nickel plated.
- * Wire Protector (WP) : Stainless spring steel.
- * Screws : Zinc plated, yellow chromed.
- * Stripping Length : WT8F - 5.3mm (0.21 in)
WT10F - 7.3mm (0.29 in)

International Approvals :

| Part # | Germany | U.S.A. | Sweden | Canada | Denmark | Norway | Finland | Holland | Austria | Belgium | Italy | Switzerland |
|------------|---------------------|----------|---------------------|----------|---------------------|---------------------|---------------------|---------------------|---------------------|---------------------|---------------------|---------------------|
| WT8F-□□ | | | | | | | | | | | | |
| WT8F-□□WP | 450V/17.5A | 600V/20A | 450V | 400V/10A | 400V | 400V | 400V | 400V | 400V | 400V | 400V | 400V |
| WT10F-□□ | 1.5 mm ² | 12-22AWG | 1.5 mm ² | 18-20AWG | 1.5 mm ² | 1.5 mm ² | 1.5 mm ² | 1.5 mm ² | 1.5 mm ² | 1.5 mm ² | 1.5 mm ² | 1.5 mm ² |
| WT10F-□□WP | 450V/24A | 600V/30A | 450V | 400V/20A | 400V | 400V | 400V | 400V | 400V | 400V | 400V | 400V |
| WT10F-□□WP | 2.5 mm ² | 10-22AWG | 2.5 mm ² | 14-18AWG | 2.5 mm ² | 2.5 mm ² | 2.5 mm ² | 2.5 mm ² | 2.5 mm ² | 2.5 mm ² | 2.5 mm ² | 2.5 mm ² |