

FVT, FST

VITREOUS or SILICONE

25 WATTS thru 225 WATTS



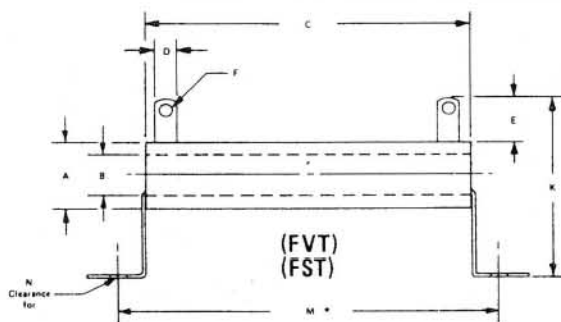
TYPE	WATT	CORE			TERMINAL				MOUNTING	
		A	B	C	D	E	F	K	M*	N
+ FVT-10	12	5/16	3/16	1 3/4	3/16	7/16	.104	15/16	2 3/16	6-32
+ FVT-25	25	9/16	5/16	2	1/4	9/16	.166	1 11/16	2 3/4	8-32
FVT-25A	30	3/4	1/2	2	1/4	9/16	.166	2 5/16	2 7/8	10-32
FVT-25B	30	5/8	29/64	2	1/4	9/16	.166	1 11/16	2 5/8	8-32
+ FVT-50	50	9/16	5/16	4	1/4	9/16	.166	1 11/16	4 3/4	8-32
FVT-50A	60	3/4	1/2	4	1/4	9/16	.166	2 5/16	4 7/8	10-32
FVT-50B	70	3/4	35/64	4 1/2	1/4	9/16	.166	2 5/16	5 3/8	10-32
+ FVT-75	75	9/16	5/16	6	1/4	9/16	.166	1 11/16	6 3/4	8-32
FVT-75A	90	3/4	1/2	6	1/4	9/16	.166	2 5/16	6 7/8	10-32
+ FVT-100	100	3/4	1/2	6 1/2	1/4	9/16	.166	2 5/16	7 3/8	10-32
FVT-130	130	1 1/8	3/4	6 1/2	5/16	5/8	.166	2 13/16	7 3/8	10-32
+ FVT-160	175	1 1/8	3/4	8 1/2	5/16	5/8	.196	2 13/16	9 3/8	10-32
+ FVT-200	225	1 1/8	3/4	10 1/2	5/16	5/8	.196	2 13/16	11 3/8	10-32

NOTE: The above chart applies to both vitreous and silicone coated resistors. The "type" nomenclature shown is for vitreous coating. When ordering silicone, substitute the letter "S" for the letter "V" in the type.

+ Standard sizes

EXAMPLE: FVT = VITREOUS FST = SILICONE

* Mounting centers shown are nominal dimensions when using HEI standard friction-grip mounting brackets. Built-in "spring" allows for minor variations in this dimension.



SPECIALS: A wide variety of special resistor core sizes are available. Also, tapped, combination fixed and adjustable resistors can be made to your specifications. For further information on your specific requirements please contact our sales office.

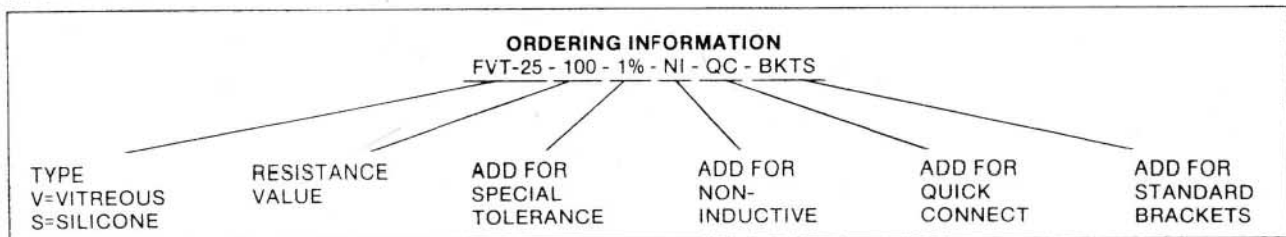
OPTIONAL FEATURES AVAILABLE

RESISTANCE TOLERANCE: All resistors are made to a standard tolerance of $\pm 5\%$ for 1 ohm and greater and $\pm 10\%$ for less than 1 ohm. If other than standard tolerance is required add this tolerance to part number. (See Below)

QUICK-CONNECT TERMINALS: Fixed resistors with a core O.D. (Dim "A") of 9/16 or 3/4 inch can be supplied with a 1/4" wide x .032 thick male quick connect terminal. When required, add "QC" to the part number. (See Below)

MOUNTING BRACKETS: Push-in friction-grip mounting brackets are available, as shown above. When required, add "BKTS" to part number. (See Below)

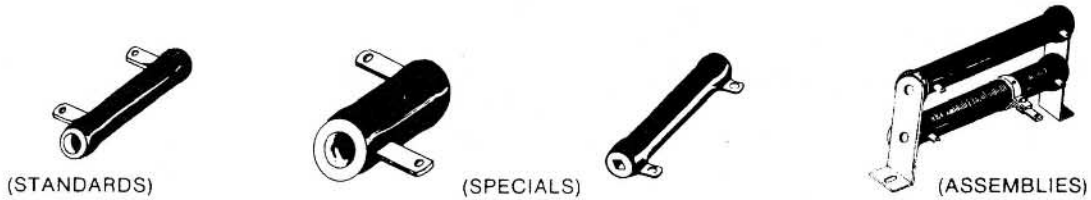
NON-INDUCTIVE: Resistors are available with Ayrton Perry type non-inductive winding. When required, add "NI" to the part number. (See Below)



FVT, FST

VITREOUS or SILICONE

25 WATTS thru 225 WATTS



ENGINEERING DATA AND SPECIFICATIONS

CORE: Ceramic

STANDARD TERMINALS: Terminals are suitable for solder or bolt connections.

QUICK CONNECT TERMINALS: Fixed resistors with a core O.D. (Den "A") of 9/16 or 3/4 inch can be supplied with a 1/4" wide x .032 thick male quick connect terminal. When required add "QC" to the part number. (See ordering information.)

COATING: Available in vitreous enamel or silicone. (See ordering information.)

STANDARD MOUNTING HARDWARE: Push in, friction-grip mounting brackets are available. (See ordering information.)

SPECIAL MOUNTING HARDWARE: Vertical and horizontal thru-bolt mounting hardware with mica or ceramic bushing for high voltage applications are available. Multiple resistor mounting brackets and live mounting brackets can also be supplied. (Contact factory for ordering information.)

TEMPERATURE COEFFICIENT: 0 ± 400 ppm/ $^{\circ}$ C 1 Ohm to 20 Ohms. 0 ± 260 ppm/ $^{\circ}$ C 20 Ohms or above. (Special TC's available. Consult factory.)

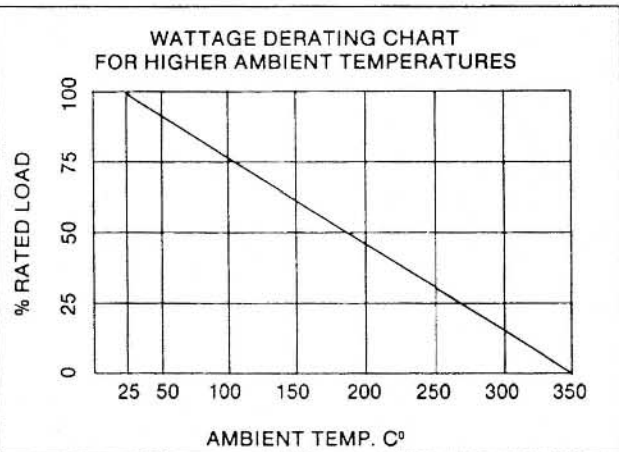
DIELECTRIC WITHSTANDING VOLTAGE: Measured from terminals to mounting brackets. 1000 VAC.

INDUCTANCE: Standard parts have single layer inductive windings. Ayrton-Perry type non-inductive winding is available. (See ordering information.)

OVERLOAD: 10 x rated wattage for 5 seconds.

TOLERANCE: $\pm 5\%$ is standard for 1 Ohm and greater. $\pm 10\%$ for less than 1 Ohm. Special tolerances available. (See ordering information.)

DERATING: Wattage rating is based on 25 $^{\circ}$ C free air rating. For higher ambient temperatures, use chart below.



SPECIALS: A wide variety of special resistor core sizes are available. Also, tapped, combination fixed and adjustable resistors can be made to your specifications. For further information on your specific requirements please contact our sales office.